

Hisense

life reimagined

USER'S OPERATION MANUAL

Before operating this unit, please read this manual thoroughly, and retain for future reference.

WDQY8014*
WDQY8014EVJM*
WDQA8014EVJM*
WDQA8014VJMW*
WDQA8514VJM*

WDQY9014EVJM*
WDQY901418VJM*
WDQA9014EVJM*
WD3Q8043B*
WD3Q8543B*

WDQY1014EVJM*
WDQA1014EVJM*
WDQA1014VJMW*
WD3Q1043B*

EN

English

INSTRUCTIONS FOR USE

SAFETY INFORMATION

BEFORE USING THE WASHING MACHINE

**PRECAUTIONS AND GENERAL
RECOMMENDATIONS**

DESCRIPTION OF THE WASHING MACHINE

EMERGENCY DOOR OPENING

BEFORE THE FIRST WASH CYCLE

PREPARATION OF THE WASHING

DETERGENTS AND ADDITIVES

CARE AND MAINTENANCE

TROUBLESHOOTING GUIDE

TRANSPORT / HANDLING

ELECTRICAL CONNECTION

INSTALLATION GUIDE

SAFETY INFORMATION

1. The manufacturer reserves the right for any modifications on the product which might be deemed necessary or useful without informing about it in this IFU.
2. Before operating your new washing machine, please read this instruction carefully, and keep it for future reference. If you have lost it accidentally, ask customer service for e-copy or hard copy.
3. Please make sure the socket is grounded securely, the water source connection is reliable.
4. This appliance is not to be used by persons (including children) with reduced physical, sensory or mental capabilities, or lack of experience and knowledge, unless they have been given supervision or instruction concerning use of the appliance by a person responsible for their safety.
5. This appliance can be used by children aged from 8 years and above and persons with reduced physical, sensory or mental capabilities or lack of experience and knowledge if they have been given supervision or instruction concerning use of the appliance in a safe way and understand the hazards involved. Children shall not play with the appliance. Cleaning and user maintenance shall not be made by children without supervision.
6. Children should be supervised to ensure that they do not play with the appliance.
7. If the supply cord is damaged, it must be replaced by the manufacturer, its service agent or similarly qualified persons in order to avoid a hazard.
8. The new hose-sets supplied with the appliance are to be used and that old hose-sets should not be reused.

9. For appliances with ventilation openings in the base, that a carpet must not obstruct the openings.
10. Children of less than 3 years should be kept away unless continuously supervised.
11. The maximum permissible inlet water pressure, 1 MPa, for appliances intended to be connected to the water mains. The minimum permissible inlet water pressure, 0.1 MPa, if this is necessary for the correct operation of the appliance.
12. **WARNING:**The appliance must not be supplied through an external switching device, such as a timer, or connected to a circuit that is regularly switched on and off by the utility.
13. The tumble dryer is not to be used if industrial chemicals have been used for cleaning.
14. Lint must not to be allowed to accumulate around the tumble dryer.(not applicable for appliances intended to be vented to the exterior of the building)
15. Adequate ventilation has to be provided to avoid the back flow of gases into the room from appliances burning other fuels, including open fires.
16. Do not dry unwashed items in the tumble dryer.
17. Items that have been soiled with substances such as cooking oil, acetone, alcohol, petrol, kerosene, spot removers, turpentine, waxes and wax removers should be washed in hot water with an extra amount of detergent before being dried in the tumble dryer.
18. Items such as foam rubber (latex foam), shower caps, waterproof textiles, rubber backed articles and clothes or pillows fitted with foam rubber pads should not be dried in the tumble dryer.

19. Fabric softeners, or similar products, should be used as specified by the fabric softener instructions.
20. Remove all objects from pockets such as lighters and matches.
21. **WARNING:** Never stop a tumble dryer before the end of the drying cycle unless all items are quickly removed and spread out so that the heat is dissipated.
22. The appliance must not be installed behind a lockable door, a sliding door or a door with a hinge on the opposite side to that of the tumble dryer, in such a way that a full opening of the tumble dryer door is restricted.
23. The maximum drying capacity is 5/6/7kg.
The maximum washing capacity is 8/8.5/9/10/10.5kg.
24. For private domestic use only.
25. This appliance is intended to be used in household and similar applications such as:
 - staff kitchen areas in shops, offices and other working environments;
 - farm houses;
 - by clients in hotels, motels and other residential type environments;
 - bed and breakfast type environments;
 - areas for communal use in blocks of flats or in laundrettes.

BEFORE USING THE WASHING MACHINE

1. Removing the packaging and inspection

- After unpacking, ensure that the washing machine is undamaged. If in doubt, do not use the washing machine. Contact After-Sales Service or your local retailer.
- Check that the accessories and supplied parts are all present.
- Keep the packaging materials (plastic bags, polystyrene parts, etc.) out of reach of children, as they are potentially dangerous.

2. Remove the transport bolts

- The washing machine is fitted with transport bolts to avoid any possible damage to the interior during transport. Before using the machine, it is imperative that the transport bolts are removed.
- After their removal, cover the openings with the 4 enclosed plastic caps.

3. Install the washing machine

- Move the appliance without lifting it by the worktop.
- Install the appliance on a solid and level floor surface, preferably in a corner of the room.
- Ensure that all four feet are stable and resting on the floor and then check that the washing machine is perfectly level (use a spirit level).
- Ensure that the ventilation openings in the base of the washing machine (if available on your model) are not obstructed by a carpet or other material.

4. Water inlet

- Connect the water supply inlet hose in accordance with the regulations of your local water company.
- Water inlet - Depending on models:
 - Single inlet - Cold water only
 - Dual inlet - Hot and cold water
- Water tap: 3/4 threaded hose connector

5. Drain

- Connect the drain hose to the siphon or hook it over the edge of a sink by means of the “U” bend supplied.
- If the washing machine is connected to an integrated drainage system, ensure that the latter is equipped with a vent to avoid simultaneous loading and draining of water (siphoning effect).
- Fix the drain hose securely to prevent scalding during machine drainage.

6. Electrical connection

- Electrical connections must be carried out by a qualified technician in compliance with the manufacturer’s instructions and current standard safety regulations.
- Data regarding voltage, power consumption and protection requirements is given on the inside of the door.
- The appliance must be connected to the mains by means of a socket with an earth connection in accordance with current regulations. The washing machine must be earthed by law. The manufacturer declines all liability for damage to property or injury to persons or animals due to non-compliance with the directions given above.
- Do not use extension leads or multiple sockets. Make sure the capacity of the socket is powerful enough to drive the machine during heating.
- Before any maintenance on the washing machine disconnect it from the mains supply.
- After installation, access to the mains plug or to disconnection from the mains supply must be ensured at all times via a double-pole switch.
- Do not operate the washing machine if it has been damaged during transport. Inform After-Sales Service.
- Mains cable replacement is only to be carried out by After-Sales Service.
- The appliance must only be used in the household for the prescribed uses.

Minimum housing dimensions:


Width: 615 mm

Height: 855 mm


Depth: refer to programme chart

PRECAUTIONS AND GENERAL RECOMMENDATIONS

1. Packaging

- The packaging material is entirely recyclable, and marked with the recycling symbol . Adhere to current local regulations when disposing of packaging material.

2. Disposing of packaging and scrapping old washing machines

- The washing machine is built from reusable materials. It must be disposed of in compliance with current local waste disposal regulations.
- Before scrapping, remove all detergent residues, break the door hook, and cut off the power cable so that the washing machine is made unusable.
-  This appliance is marked according to the European directive on Waste of Electrical and Electronic Equipment (WEEE). By ensuring that this product is disposed of correctly, you will help prevent potential negative consequences for the environment and human health, which could otherwise be caused by inappropriate waste handling of this product.

The symbol on the product, or on the documents accompanying the product, indicates that this appliance may not be treated as household waste. Instead it shall be handed over to the applicable collection point for the recycling of electrical and electronic equipment. Disposal must be carried out in accordance with local environmental regulations for waste disposal. For more detailed information about treatment, recovery and recycling of this product, please contact your local city office, your household waste disposal service or the shop where you purchased the product.

3. Location and surroundings

- The washing machine must only be installed in enclosed spaces. Installation in the bathroom or other places where air is humid is not recommended.
- Do not store flammable fluids near the appliance.

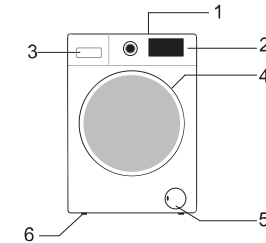
4. Safety

- Do not leave the appliance plugged in when not in use. Never plug or unplug the power from the mains supply, if your hands are wet.
- Turn off the tap.
- Before any cleaning and maintenance, switch off the machine or disconnect it from the mains.

- Clean the outside of the washing machine with a damp cloth. Do not use abrasive detergents.
- Never open the door forcibly or use it as a step.

DESCRIPTION OF THE WASHING MACHINE

- 1 Worktop
- 2 Control panel
- 3 Detergent dispenser
- 4 Door
- 5 Plinth covering pump access
- 6 Adjustable feet



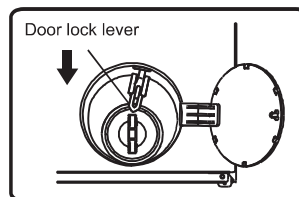
Control panel layout and appearance will depend on the model.

EMERGENCY DOOR OPENING

In case of failure to open the door due to power outage or other special circumstances, the door lock lever at the drainage pump door can be used for emergency opening.


Note:

1. Do not operate when the machine is working normally;
2. Before operation, please make sure that the inner barrel has stopped turning, without high temperature, and the water level is lower than the clothing inlet. If the water level is higher than the clothing inlet, drain off water through the drain-away pipe (if available) or by slowly unscrewing the filter.
3. Operation method: Open the cover of drainage pump door, pull down the lock lever with the help of a tool, and then the door can be opened(indicated in the figure).




BEFORE THE FIRST WASH CYCLE

To remove any residual water used during testing by the manufacturer, we recommend that you carry out a short wash cycle without laundry.

- 1 Open the tap.
- 2 Close the door.
- 3 Pour a little detergent (about 30 ml) into the main wash chamber  of the detergent dispenser .
- 4 Select and start a short programme (see separate quick reference guide).

PREPARATION OF THE WASHING

1. Sort the laundry according to...
 - Type of fabric / care label symbol
Cottons, mixed fibres, easy care/synthetics, wool, handwash items.
 - Colour
Separate coloured and white items. Wash new coloured articles separately.
 - Loading
Wash items of different sizes in the same load to improve washing efficiency and distribution in the drum.
 - Delicates
Wash small items (e.g. nylon stockings, belts etc.) and items with hooks (e.g. bras) in a cloth bag or pillow case with zip. Always remove curtain rings or wash curtains with the rings inside a cotton bag.
2. Empty all pockets
Coins, safety pins etc. can damage your laundry as well as the appliance drum and tub.
3. Fasteners
Close zips and fasten buttons or hooks; loose belts or ribbons should be tied together.
4. Stain removal
Blood, milk, eggs etc. are generally removed by the automatic enzyme phase of the programme.
 - To remove red wine, coffee, tea, grass and fruit stains etc. add a stain remover to the main wash chamber  of the detergent dispenser.
 - Pre-treat heavily-soiled areas with stain remover if necessary.

5. Loading the laundry

- Open the door.
- Load the articles one at a time loosely into the drum, without overfilling. Observe the load sizes given in the quick reference guide.

Note: Overloading the machine will result in unsatisfactory washing results and creased laundry.

- Close the door .

DETERGENTS AND ADDITIVES

Always use high efficiency, low foam detergent for a front load machine.

The choice of detergent depends on:

- type of fabric (cottons, easy care/synthetics, delicate items, wool).
Note: Use only specific detergents for washing wool
- colour
- the wash temperature
- degree and type of soiling

Remarks:

Any whitish residues on dark fabrics are caused by insoluble compounds used in modern phosphate-free powder detergents. If this occurs, shake or brush out the fabric or use liquid detergents. Use only detergents and additives specifically produced for domestic washing machines. When using descaling agents, dyes or bleaches for the pre-wash, make sure that they are suitable for use in domestic washing machines. Descalers could contain products which could damage your washing machine. Do not use any solvents (e.g. turpentine, benzine). Do not wash fabrics that have been treated with solvents or flammable liquids.

Dosage

Follow the dosage recommendations on the detergent pack. They depend on:

- degree and type of soiling
- size of wash
follow the detergent manufacturer's instructions for a full load;
half load: 3/4 the amount used for a full load;
minimum load (about 1 kg): 1/2 the amount used for a full load;
- water hardness in your area (ask for information from your water company).
Soft water requires less detergent than hard water.

Notes:

Too much detergent can result in excess foam formation, which reduces washing efficiency. If the washing machine detects too much foam, it may prevent spinning. Insufficient detergent may result in grey laundry in time and also calcifies the heating system, drum and hoses.

Where to put detergent and additives

The detergent drawer has three chambers (fig. “ A or B ”)

Prewash chamber 

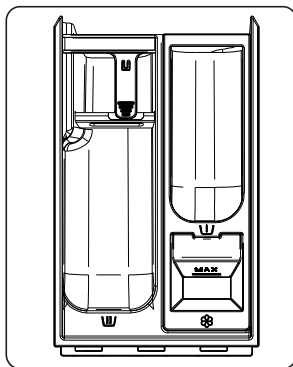
- Detergent for the prewash / soak

Mainwash chamber 

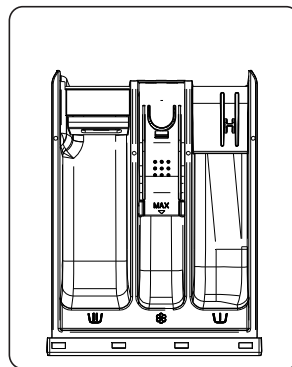
- Detergent for the main wash
- Stain remover
- Water softener (water hardness class 4)

Softener chamber 

- Fabric softener



A



B

Notes:

- Keep detergents and additives in a safe, dry place out of the reach of children.
- Liquid detergents can be used for programmes with prewash. However, in this case a powder detergent must be used for the main wash.
- Do not use liquid detergents when activating the “Start Delay” function (if available on your washing machine).
- To prevent dispensing problems when using highly concentrated powder and liquid detergents, use the special detergent ball or bag supplied with the detergent and place it directly inside the drum.
- When using descaling agents, bleaches or dyes, make sure that they are suitable for washing machines. Descalers could contain compounds that can damage parts of your washing machine.
- Do not use any solvents in the washing machine (e.g. turpentine, benzene).

CARE AND MAINTENANCE

Appliance exterior and control panel

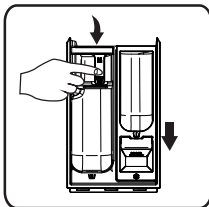
- Can be washed down with a soft, damp cloth.
- A little neutral detergent (non abrasive) can also be used.
- Dry with a soft cloth.

Door seal

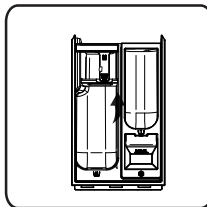
- Clean with a damp cloth when necessary.
- Check the condition of the door seal periodically.

Detergent dispenser

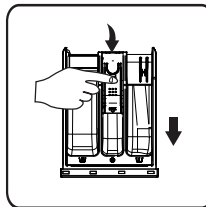
- 1 Press the release lever in the main wash compartment downward and remove the drawer (fig. “C or E”).
- 2 Remove siphon in softener slot. (fig. “D or F”).
- 3 Wash all the parts under running water.
- 4 Refit the siphon in the detergent drawer and fit the drawer back inside its housing.



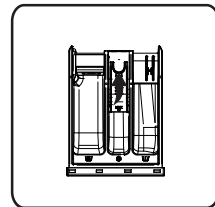
C



D



E



F

Filter

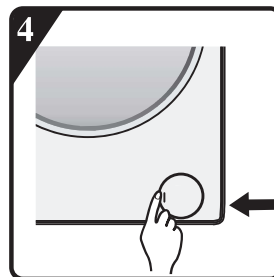
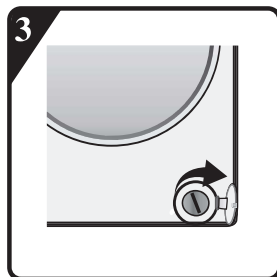
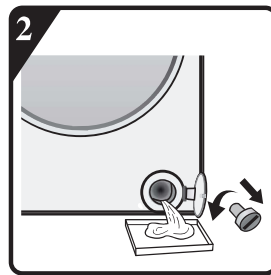
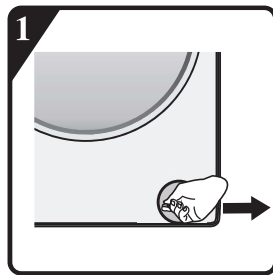
We recommend that you check and clean the filter regularly, at least two or three times a year.

Especially:

- If the appliance is not draining properly or if it fails to perform spin cycles.
- If the pump is blocked by a foreign body (e.g. buttons, coins or safety pins).

IMPORTANT: Ensure that the water has cooled before draining the appliance.

- 1 Stop the appliance and unplug it.
- 2 Insert removal tool like slotted screwdriver into the small opening of bottom baffle, press the bottom baffle downward with much strength and open it.
- 3 Put a flat container under filter door and then drain with emergency drain pipe. Then, loosen filter anticlockwise and completely unscrew and remove the filter.
- 4 Clean the filter and the filter chamber.
- 5 Check that the pump rotor moves freely.
- 6 Re-insert the filter and screw it in clockwise as far as it will go.
- 7 Reinstall the plinth.



Water supply hose

Check the supply hose regularly for brittleness and cracks and replace it if necessary using a new hose of the same type (available from After-Sales Service or specialist dealer).

Mesh filter for water connection

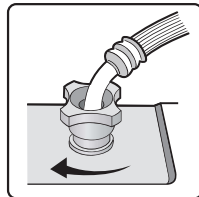
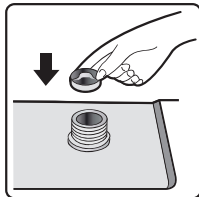
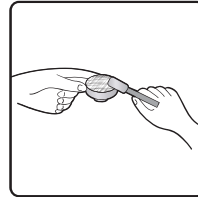
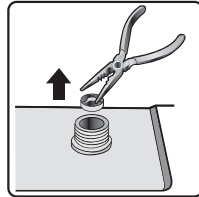
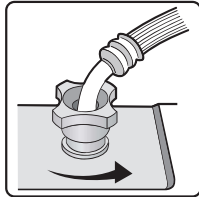
Check and clean regularly.

For washing machines with an inlet hose as shown on pictures "G",

- 1 Close the tap and loosen the inlet hose on the tap.
- 2 Clean the internal mesh filter and screw the water inlet hose back onto the tap.
- 3 Now unscrew the inlet hose on the rear of the washing machine.
- 4 Pull off the mesh filter from the washing machine connection with universal pliers and clean it.
- 5 Refit the mesh filter and screw the inlet hose on again.
- 6 Turn on the tap and ensure that the connections are completely water-tight.



G



TROUBLESHOOTING GUIDE

Depending on the model, your washing machine is equipped with various automatic safety functions. This enables faults to be detected in good time and the safety system can then react appropriately. These faults are frequently so minor that they can be resolved within a few minutes.

The washing machine will not start, no indicator lamps are on.

Check whether:

- the mains plug is inserted into the socket
- the wall socket is functioning correctly (use a table lamp or similar appliance to test it).

The washing machine will not start... and the “Start/Pause” indicator lamp flashes.

Check whether:

- the door is properly closed (child safety);
- the “**Start/Pause**” button has been pressed;
- the “Water tap closed” indication lights up. Open the water tap and press the “**Start/Pause**” button.

The appliance stops during the programme (varies depending on model)

Check whether:

- the door has been opened and the “**Start/Pause**” indicator lamp is flashing. Close the door and press the “Start/Pause” button again.
- Check if there is too much foam inside, machine enters kill-foam routine. The machine will run again automatically after a period.
- the washing machine’s safety system has been activated (see “Fault description table”).

Residue from detergent and additives left in the detergent drawer at end of wash.

Check whether:

- the cover grid of the softener chamber and the separator of the main wash chamber are correctly installed in the detergent dispenser and all parts are

- clean (see "Care And Maintenance");
- sufficient water is entering. The mesh filters of the water supply could be blocked (see "Care and Maintenance");
- the position of the separator in the main wash chamber is adapted to the use of powder or liquid detergent (see "Detergent and Additives").

Machine vibrates during spin cycle.

Check whether:

- the washing machine is level and standing firmly on all four feet;
- the transport bolts have been removed. Before using the machine, it is imperative that the transport bolts are removed.

Final spin results are poor.

The washing machine has an imbalance detection and correction system. If individual heavy items are loaded (e.g. bathrobes), this system may reduce the spin speed automatically or even interrupt the spin completely if it detects too great an imbalance even after several spin starts, in order to protect the washing machine.

- If the laundry is still too wet at the end of the cycle, remove some articles of laundry and repeat the spin cycle.
- Excessive foam formation may prevent spinning. Use the correct amount of detergent.
- Check that the spin speed selector has not been set to "0".

If your washing machine has a time display: the programme time initially displayed is lengthened / shortened by a period of time:

This is a normal capacity of the washing machine to adapt to factors that can have an effect on the wash programme time, e.g.:

- excess foam formation;
- load imbalance due to heavy items of laundry;
- prolonged heating time due to reduced inlet water temperature;

Because of influences like these, the time remaining in the programme run is recalculated, and updated if necessary. In addition, during the filling phase, the washing machine determines the load and if necessary adjusts the initial programme time displayed accordingly. During such update periods, an animation appears on the time display.

Fault Code List	
Displayed on Display Window	Fault Description
"F01"	Water inflow fault
"F03"	Drainage fault
"F13"	Door lock fault
"F14"	Door unlock fault
"F24"	Overflow or too much foam.
else fault code, "F04-F98"	Electronic module fault.
"Unb"	Unbalance alarm

a. "F01" displayed on screen

The machine is not fed with water or insufficient water. Check:

- Faucet is fully open and has enough water pressure.
- Water inlet pipe is knotted or not.
- Filtering net of water inlet pipe is blocked or not.
- Water pipe is frozen or not.

Press "Start/Pause" key after fault is removed.

If fault occurs again, please contact with after-sale service (refer to after-sale service.).

b. "F03" displayed on screen

The washer is not emptied. The washer stops the program being executed. Shut down the machine and disconnect power supply. Check:

- Drain pipe is knotted or not.
- Filter in drain pump is blocked or not.

IMPORTANT: Ensure that the water has cooled before draining the appliance.

- the drain hose is frozen up.

Plug in the appliance again.

Select and start the "Spin" programme or push the "Start/Pause" button for at least 3 seconds and restart the desired programme.

If the fault occurs again, please contact After-Sales Service (see "After-Sales Service").

C. Fault code

The washer stops when the program is running. The display window shows fault code "F13", "F14", "F24", else fault codes from "F04" to "F98" or "Unb".

If fault code "F13" is shown

Door lock is abnormal. Start program for 20 sec and unlock the washer door (PTC) to check whether the door is closed.

Open or close it again.

After fault is removed, press "Start/Pause" key. If fault occurs again, disconnect power supply and contact with after-sale service.

If fault code "F14" is shown

Door open fault.

Action: Press "Start/Pause" button. The washing machine will try to open the door.

The alarm will not be removed until the door is unlocked. Or, turn the knob to Off for 3 seconds to turn off the machine. Choose the desired programme to start the machine. The alarm will be removed.

If fault code "F24" is shown

Water level reaches overflow level.

Remove it by pressing "Start/Pause" key and feed water.

Select and start required program. If fault occurs again, disconnect power supply and contact with after-sale service.

If else fault code "F04" to "F98" is shown

Electronic module fails.

Turn the knob to Off for 3 seconds to turn off the machine.

After fault is removed, press "Start/Pause" key. If fault occurs again, disconnect power supply and contact with after-sale service.

If fault code "Unb" is shown

Unbalance alarm shall be solved by the following methods

1. Laundry winding

Turn the knob to "off" for 3 seconds for shutdown, open the door, shake the clothes and put them back into the washing machine, then select the single dewatering program to dry again.

2. Too light-weighted laundry

Turn the knob to "off" for 3 seconds for shutdown, open the door, put in one or two towels, and then select the single dewatering program to dry again.

Before contacting After-Sales Service:

- 1 Try to remedy the problem yourself (see "Troubleshooting Guide").
- 2 Restart the programme to check whether the problem has solved itself.
- 3 If the washing machine continues to function incorrectly, call After-Sales Service.

TRANSPORT/HANDING

Never lift the appliance by the worktop when transporting.

- 1 Pull out the mains plug.
- 2 Turn off the tap.
- 3 Disconnect the inlet and drain hoses.
- 4 Eliminate all water from the hoses and from the appliance (see “Removing the Filter”, “Draining Residual Water”)
- 5 Fit the transport bolts (obligatory)
- 6 The machine is over 55 kg in weight, two persons are needed to move it.

ELECTRICAL CONNECTION

Only use a socket with an earth connection.

- Do not use extension leads or multi sockets.
- Electric supply must be adequate for the machine's 10 A Current Rating.
- Electrical connections must be made in accordance with local regulations.
- The electrical power cable must be replaced exclusively by a licensed electrician.

ELECTRICAL CONNECTION



INSTALLATION GUIDE



NOISE, EXCESSIVE VIBRATIONS AND WATER LEAKAGES CAN BE CAUSED BY INCORRECT INSTALLATION.

NEVER MOVE THE APPLIANCE BY LIFTING IT BY THE WORKTOP.

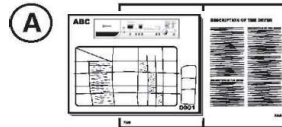
- Read this “INSTALLATION GUIDE” before operating.
- Keep this “INSTALLATION GUIDE” for future reference.
- Read the general recommendations about disposing of packaging in the INSTRUCTION FOR USE.

PARTS SUPPLIED

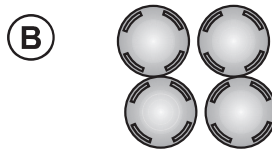
- Package with small items



- Instruction for use, installation guide, warranty card (depends on model)



- 4 plastic caps



- Wrench



- Inlet hose (inside the machine or already installed)
 - Cold inlet hose
 - Hot inlet hose (if available, depending on models)



- "U"-bend (inside the machine or already installed)



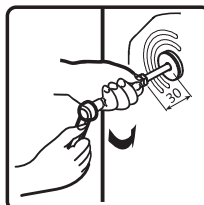
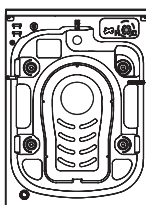
- Bottom cover (depends on model)



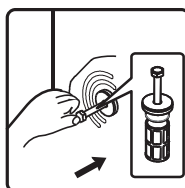
BEFORE USING THE WASHER, PLEASE REMOVE TRANSPORT BOLTS!

Important: Transport bolts which are not removed can cause damage to the appliance.

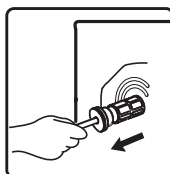
- 1 Screw off all transportation bolts for approx. 30mm with wrench following the direction of arrow shown (not fully screw it off).



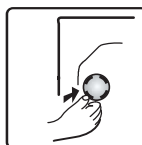
- 2 Push four transportation bolts on horizontal direction inward and loose transportation bolt.



- 3 Pull out transportation bolt together with rubber part and plastic part.



- 4 To ensure safety and reduce noise, you should install the transportation bolt cover supplied with the unit. Lean and place the transportation bolt into hole and press it following the shown direction until it clicks.



Important: Keep the transport bolts and the wrench for future transporting of the appliance and in this case refit the transport bolts in reverse order.

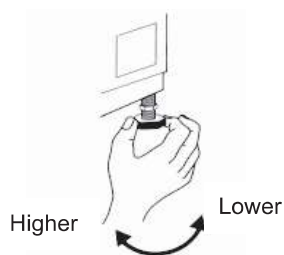
ADJUSTMENT OF THE FEET

The appliance must be installed on a solid and level floor surface (if necessary use a spirit level). If the appliance is to be installed on a wooden floor, distribute the weight by placing it on a 60x60cm sheet of plywood at least 3cm in thickness and secure it to the floor. If the floor is uneven, adjust the 4 leveling feet as required; do not insert pieces of wood etc. under the feet.

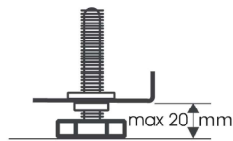
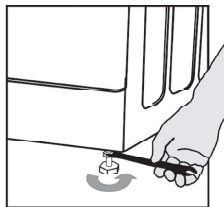
- ⑤ Slacken the locknut clockwise (see arrow) using the wrench.



- ⑥ Lift the machine slightly and adjust the height of the foot by revolving it.



- ⑦ **Important:** tighten the locknut by turning it anti-clockwise towards the appliance casing.

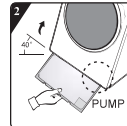
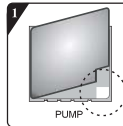


INSTALL BOTTOM COVER

To realize quieter operation, a bottom cover is supplied with the unit (only applies to some of the Hisense washers). After installing the cover at the bottom of the washer, the noise level will be greatly reduced. Please ask for advice from specialists before installing the cover, nevertheless, the machine can be used without the bottom cover.

8 Noise-Reduction Bottom Plate Installation Instructions

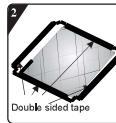
A: Stick acoustic wool to the side of bottom cover plate with the letter of "PUMP". Tilt the washer by 30°-40°, when installing the bottom cover, please face the side with sound insulation upwards and attach 'PUMP' at the corner of the cover to the position of the pump in the washer.



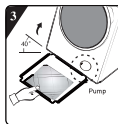
B:



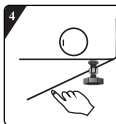
Before installing the noise-reduction bottom plate, align and paste the acoustic absorption wool with and along the right-angle impression on bottom plate (this procedure is unnecessary for some of the models without acoustic absorption wool).



Remove surface paper on double sided tape on four sides of the bottom plate.



Incline the machine to an angle of 40° and let the side with right-angle notch face towards front of the washing machine, as shown in the figure. Insert the side with oblique-angle notch between two foot screws at back of the washing machine completely in place. Then, install the bottom plate and ensure that it contacts with bottom of the washing machine closely.



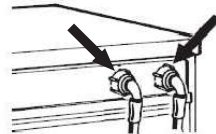
Press the double sided tape on four sides manually to secure the noise-reduction palte to the machine body firmly.

CONNECT THE WATER SUPPLY INLET HOSE

Hot (Depending on models) Cold

9

If the water inlet hose is not already installed, it must be screwed to the appliance. For models with single Inlet, Fix the inlet hose to the cold water tap and to the inlet valve on the rear side of the machine. The blue marked hose is only for cold water. Depending on the model, the hot water hose marked with red should also be connected, for models having dual inlets.



Ensure that:

All connections are tightly fixed.

Do not allow children to operate, crawl on, be near or inside your washer.

Note that during the wash cycles, the surface temperature of the porthole door may increase.

Close supervision of children is necessary when the appliance is used near children.

⑩ Screw by hand the inlet hose onto the tap, tightening the nut.

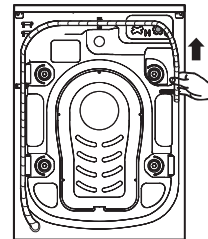
Attention:

- no kinks in the hose!
- The appliance **must not** be connected to the mixing tap of an un-pressurized water heater.
- Check water-tightness of connections by turning the tap completely on.
- If the hose is too short, replace it with a suitable length of pressure resistant hose (1000 kPa min)
- Check the inlet hose regularly for brittleness and cracks and replace if necessary.
- The washing machine can be connected without a non-return valve.

CONNECT THE DRAIN HOSE

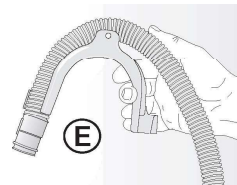
⑪ In case the drain hose is installed as shown below:

Unhook it only from the right clip (see arrow)



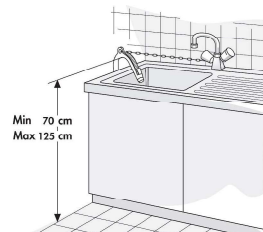
⑫ Connect the drain hose to the Drain or hook it over the edge of a sink by means of the "U" bend.

Fit the "U" bend E, if not already installed, at the end of the drain hose.



Notes:

- Ensure that there are no kinks in the drain hose.
- Secure the hose so that it cannot fall down. After wash phase, machine will drain out hot water.
- Small hand basins are not suitable.
- To make an extension use a hose of the same type and secure the connections with clips.
- Max. Overall drain hose length: 2.50 m.



Hisense

life reimagined